



# COUNTY CLARE'S WILD ATLANTIC WAY

WONDERFUL **EXPERIENCES**  
TO BE EXPLORED AND  
ENJOYED



COMHAIRLE CONTAE AN CHLÁIR  
CLARE COUNTY COUNCIL





## 230 kms of coastline

Rugged Cliff Coast  
- Windswept Surf Coast - Blue Flag Beaches



## Iconic Landmarks

Kilkee and Cliffs of Moher Cliff Walks - Loop Head Peninsula - Ancient Dolmen - Caves & Lighthouses



## Events & Festival Calendar

Traditional Music & Dance - Food & Drink Festivals - Family Fun



## Heritage

Flora and Fauna - Historic Sites - Trails along the Land - Burren & Cliffs of Moher UNESCO Global Geopark

## Dining

Fabulous Food from Land & Sea  
- Food Trails & Festivals



## Diverse Quality Accommodation

Camping & Glamping  
- B&Bs - Cosy Hotels  
- 5-star Golf Resorts



## Culture

Home of Traditional Music & Dance | Irish Language & Heritage | Fishing & Farming



## Stories

Meet the Locals - Charming Towns and Villages - Follow the Winding Roads - Best Irish Pubs

## Activities

Golf - Outdoor Pursuits - Surfing  
- Walking & Hiking  
- Cycling - Boat Tours - Farm Experiences



[www.thewildatlanticway.com](http://www.thewildatlanticway.com)  
[www.VisitClare.ie](http://www.VisitClare.ie)

# WONDERFUL EXPERIENCES TO BE EXPLORED AND ENJOYED ALONG CLARE'S WILD ATLANTIC WAY

IRELAND'S WILD ATLANTIC WAY STRETCHES FOR 2,600 KM AND IS ONE OF THE LONGEST COASTAL ROUTES IN THE WORLD. **COUNTY CLARE'S COASTLINE**, IN THE HEART OF THE WEST COAST OF IRELAND, IS CENTRED ON THIS ROUTE AND COMBINES THE STUNNING NATURAL BEAUTY OF ITS LONG, MEANDERING COAST WITH UNIQUE WINDSWEPT LANDSCAPES AND CHOICE DOLLOPS OF IRISH CULTURE. RUGGED NATURE AND THE TIMELESS OCEAN MEET ON THE COUNTY'S COAST. THE BURREN, AN ANCIENT REGION OF TORTURED STONE AND ALIEN VISTAS, STRETCHES DOWN TO THE COAST AND RIGHT OUT TO THE ARAN ISLANDS.

CLARE'S SOUL IS STEEPED IN TRADITIONAL IRISH CULTURE AND MUSIC - WHICH CAN BE EXPERIENCED AND ENJOYED THROUGHOUT THE COUNTY.

**IN THE FOLLOWING PAGES, WE HIGHLIGHT JUST SOME OF THE EXPERIENCES WHICH CAN BE EXPLORED AND ENJOYED DURING YOUR VISIT.**



WILD ATLANTIC WAY

## County Clare

ENNIS 

FLY SHANNON



See Map on Page 14



## Shuck Off Oyster Experience

📍 New Quay, Co. Clare



An educational and interactive experience into the world of oysters and the sea that they live in. You will get an introduction to the area and to the sea creatures that live on the sea floor outside their window. They teach you how oysters breed and grow and show you how to open them. You can then enjoy eating oysters, along with specially selected wines.

**T** 086 254 9837  
[www.FlaggysoreOysters.ie](http://www.FlaggysoreOysters.ie)

MAP REF: J2

## Burren Nature Sanctuary

📍 Kinvara, Co. Galway



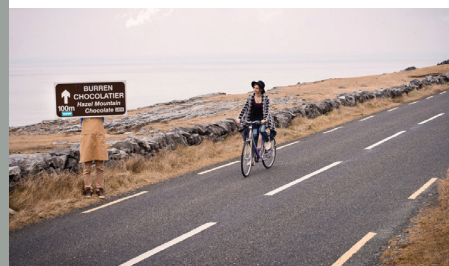
A magical introduction to the Burren. On a 50-acre site, experience flora, fauna and habitats, from shattered limestone pavement to a lake that disappears every twelve hours. See native flora in the Burren Botany Bubble and the 15-acre wildflower meadow. Experience ancient hazel woodlands and meet friendly farm animals. Relax in the café, enjoy local produce and browse the AVOCA shop.

**T** 091 637 444  
[www.BurrenNatureSanctuary.ie](http://www.BurrenNatureSanctuary.ie)

MAP REF: J2

## Hazel Mountain Chocolate - Visitor Experience

📍 Bellharbour, Co. Clare



Enjoy a guided tour of their bean to bar chocolate factory. Learn about how they turn the humble cocoa bean into delicious, award-winning chocolate. Their 30-minute tour will take you through all the stages of chocolate making. Most importantly, you'll have the opportunity to sample some of their best chocolates! While children are very welcome, their tours are best suited to age 12-years or older.

**T** 065 707 8847  
[www.HazelMountainChocolate.com](http://www.HazelMountainChocolate.com)

MAP REF: J2

## Rathbourny Valley Guided Walk

📍 Ballyvaughan, Co. Clare



Enjoy a 2-course meal and guided walking tour of the majestic rocky Burren. Feel the limestone, breath fresh air and learn how the locals live now and for thousands of years gone by. The beautiful secluded Rathbourny Valley is rich in antiquities, including a large ring fort, a medieval ecclesiastical site and an 18th-century church. The walk is 1.5 to 2 hours duration.

**T** 087 763 3241  
[www.BurrenWine.ie](http://www.BurrenWine.ie)

MAP REF: H2

## Bay SUP Stand Up Paddleboarding

📍 Ballyvaughan, Co. Clare



Bay SUP run stand-up paddleboarding lessons, tours and rentals from the beautiful village of Ballyvaughan in the heart of the Burren in North West Clare. The calm waters on the southern shores of Galway Bay offer the most amazing location to experience paddleboarding.

**T** 087 213 3996  
[www.BaysUp.ie](http://www.BaysUp.ie)

MAP REF: H2

## Aillwee Cave and Birds of Prey Centre

📍 Ballyvaughan, Co. Clare



Discover both overground and underground experiences. Let Aillwee's knowledgeable guides welcome you to the Cave and take you into the dramatic underworld of this unique landscape. The Birds of Prey Centre there is home to one of the largest and most varied collections of raptors in Ireland. Stop off at the Farmshop, which also reveals the unique 35-year story of Burren Gold Cheese Making at Aillwee.

**T** 065 707 7036  
[www.AillweeCave.ie](http://www.AillweeCave.ie)

MAP REF: H3



## Burren Mountain Tours

📍 Fanore, Co. Clare



This is a unique driving experience over their private mountain farm where you learn about life and farming in the Burren. Travelling in a 4WD vehicle along a track they have created around the mountain, you climb to 1,000ft overlooking the Atlantic Ocean. Along the route, you will encounter relics of life 5,000 years ago. The views from the mountain top are breath-taking.

**T** 065 707 6164  
[www.BurrenMountainTours.com](http://www.BurrenMountainTours.com)

MAP REF: G3

## Aloha Surf School

📍 Fanore, Co. Clare



Aloha Surf School runs surfing lessons at Fanore, in the heart of the Burren. The beautiful Fanore Beach, with all its space and uncrowded surf, provides the ideal location for those wanting to take part in the exciting experience that is learning to surf. Surfing with Aloha allows surfers to escape the masses and enjoy a unique surfing adventure.

**T** 087 213 3996  
[www.SurfSchool.ie](http://www.SurfSchool.ie)

MAP REF: G2

## Taste the Atlantic - The Salmon Experience

📍 Lisdoonvarna, Co. Clare



In this interactive experience, you will follow the story of Irish Salmon through time, watch the legend of the Salmon of Knowledge unfold before your eyes and learn about old ways of fishing salmon. Original newsreels from decades ago reveal why and how modern aquaculture evolved. Get competitive and have fun solving jigsaw puzzles and quizzes! Suitable for school children and grown-ups alike.

**T** 065 707 4432  
[www.BurrenSmokehouse.com](http://www.BurrenSmokehouse.com)

MAP REF: G4

## Doolin2Aran Ferries - Aran Island & Cliffs of Moher

📍 Doolin Pier, Doolin, Co. Clare



Take a boat trip on the Atlantic ocean with Garrihy's Doolin2Aran Ferries. The Garrihy brothers have been fishing and sailing western waters for generations. You can sail with them from Doolin to the Cliffs of Moher or the beautiful Aran Islands - or take both trips the same day. Sailings depart at various times from Doolin on their fast, comfortable fleet, daily from mid-March to the end of October.

**T** 065 707 5949  
[www.Doolin2AranFerries.com](http://www.Doolin2AranFerries.com)

MAP REF: F4

## Doolin Ferry Co - Aran Islands & Cliffs of Moher Cruises

📍 Doolin Pier, Doolin, Co. Clare



Doolin Ferry Co, established in 1970, over 50 years ago, by Bill O'Brien is the original Doolin Ferry company. With their express ferries, it now takes only 15 minutes to Inis Oirr, 30 minutes to Inis Meain and 35 minutes direct to Inis Mor. With the shortest crossing time ever, travellers have more time to include a Cliffs of Moher Cruise.

**T** 065 707 5555  
[www.DoolinFerry.com](http://www.DoolinFerry.com)

MAP REF: F4

## North Clare Sea Kayaking

📍 Doolin, Co. Clare



North Clare Sea Kayaking offer guided sea kayaking tours along the spectacular coastline of the Burren and County Clare. Voted the number one attraction in Doolin by Trip Advisor. It also features in the Top 50 Secrets along the Wild Atlantic Way. NEW: Top of the line P&H kayaks, plus all-new gear to go with it.

**T** 085 119 5489  
[www.NorthClareSeaKayaking.com](http://www.NorthClareSeaKayaking.com)

MAP REF: F4



## Doolin - Cliffs of Moher and Food Tours

📍 Doolin Co. Clare



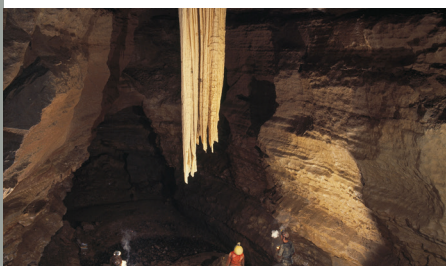
Ollies Tours offer two tours from Doolin. The Doolin - Cliffs of Moher Tour, for groups of 12 or less, is a guided walk from Doolin to the Cliffs of Moher along a breath-taking route. On the Doolin Food Tour, you will meet with local producers, see how the food is made and get to try some. The foodie experience is perfect for families, couples, and friends.

**T** +353 86 2023534  
[www.OlliesTours.com](http://www.OlliesTours.com)

MAP REF: F4

## Doolin Cave

📍 Doolin, Co. Clare



The award-winning Doolin Cave and visitor centre is home to the Great Stalactite. At 7.3 metres (23feet), it is the longest free-hanging stalactite in Europe and suspends from the Cave's ceiling like a gigantic chandelier. It is astounding. Visitors can experience a fully-guided tour of the Cave. There is a café and gift shop on-site and an interpretation centre and farmland nature trail.

**T** 065 707 5761  
[www.DoolinCave.ie](http://www.DoolinCave.ie)

MAP REF: f4

## Cliffs of Moher Visitor Experience

📍 Liscannor, Co. Clare



Visit the awe-inspiring Cliffs of Moher Visitor Experience for the ultimate day out with free admission for children under 12. Voted Ireland's favourite natural attraction, take in the breath-taking views, walk the paved pathways, and enjoy treats in the café, shops and picnic areas. Visit early morning or late afternoon for the best experience and rates. Online booking only at [www.CliffsofMoher.ie](http://www.CliffsofMoher.ie)

**T** 065 708 6141  
[www.CliffsofMoher.ie](http://www.CliffsofMoher.ie)

MAP REF: F4

## Moher Hill Open Farm

📍 Liscannor, Co. Clare



Visitors have a chance to feed and pet a wide variety of animals, including llamas, alpaca, deer, ostrich, emu, raccoons and much more. Whizz on the go-karts, putt in the golf course, jump on the bouncing castle, find fairies on the fairy walk or explore the climbing frames. There is lots to discover, both indoors and outdoors, at the award-winning Moher Hill Open Farm.

**T** 087 225 8347  
[www.MoherFarm.ie](http://www.MoherFarm.ie)

MAP REF: F5

## Wild Medicinal Herb Walk and/or Workshop

📍 Lahinch, Co. Clare



Lisa Guinan is a fully qualified Naturopathic Herbalist in practice since 2008. She teaches people about the many wonderful medicinal plants, flowers and trees that grow locally and abundantly. She offers herb walks in the countryside and practical step by step workshops demonstrating how to harvest these plants and transform them into beautiful yet highly effective remedies for everyday care.

**T** 087 753 1023  
[www.IrishHerbalRoots.ie](http://www.IrishHerbalRoots.ie)

MAP REF: F5

## Wild Kitchen Seaweed - Walk, Talk, Taste

📍 Lahinch, Co. Clare



Wild Kitchen is a culinary exploration of Ireland's edible landscape through foraging walks, cookery demonstrations, and wild food experiences. Highlights include discovering our fifth taste, umami; reconnecting with the original source of our food during a walk that can be described as eco-therapy, seeing amazing wildlife - seals, seabirds, and sea creatures. Learn a new skill in harvesting seaweed as our ancestors did.

**T** 087 687 7890  
[www.WildKitchen.ie](http://www.WildKitchen.ie)

MAP REF: F5



## Surf Lessons with Lahinch Surf School

📍 Lahinch, Co. Clare



Whether you are a first-timer or a seasoned professional, you can expect to have a wonderful, safe and fun time in the surf on the beautiful beach of Lahinch with Lahinch Surf School. You will learn how to perfect your "POP UP" to your feet in 1,2, or 3 steps. Equipment is provided along with one of their fully qualified Irish Surfing Association Surf instructors.

**T** 087 960 9667  
[www.LahinchSurfSchool.com](http://www.LahinchSurfSchool.com)

MAP REF: F5

## Ben's Surf Clinic

📍 Lahinch, Co. Clare



Brace yourself for the experience of a lifetime on Ireland's top surfing beach. Suitable for beginners to advanced levels, learn how to catch a wave as you immerse yourself in the wild spirit of the Atlantic Ocean. Get the help of a passionate coach who will ensure you get the most from this adventure. All equipment, coaching and indoor changing facilities included.

**T** 086 844 8622  
[www.BensSurfClinic.com](http://www.BensSurfClinic.com)

MAP REF: F5

## The Green Room Surf School

📍 Lahinch, Co. Clare



The Green Room Surf School & Shop, established in 2000, is a small, family-run, Irish Surf Association approved surf school and eco surf shop located on the promenade in Lahinch. They provide a wide range of surf and bodyboard lessons to suit adults and children of all abilities.

**T** 086 142 2988  
[www.TheGreenRoom.ie](http://www.TheGreenRoom.ie)

MAP REF: F5

## St.Tola Goat Farm Experience

📍 Maurices Mills, Ennistymon, Co. Clare



The home of St. Tola Goats Cheese. Visit the family farm and see how they rear their herd of dairy goats and make their multi-award-winning range of St.Tola Goats cheeses. Visitors get to spend time with the goats, take photos and taste their range of cheeses. There are various tour options depending on the size of the group and any specific requirements.

**T** 065 683 6633  
[www.St-Tola.ie](http://www.St-Tola.ie)

MAP REF: I5

## e-whizz Electric Bike Tours

📍 Kilfenora, Co. Clare



e-whizz provide electric-bike tours of the Burren, or you can rent an electric bike and enjoy a self-guided tour. Take the roads less travelled into the heart of the rocky landscape of the Burren. Explore tiny villages with cosy pubs and cafés, legendary historical and archaeological sites and the famous flora of the Burren, all on quiet lanes and backroads.

**T** 087 627 7000  
[www.e-whizz.com](http://www.e-whizz.com)

MAP REF: H4

## The Burren Centre

📍 Kilfenora, Co. Clare



The Burren Centre introduces the visual delights and ancient mysteries which wait to be discovered in this corner of Ireland. Experience the Burren in geology, folklore, farming, and people. The Centre is not just the gateway to the Burren - it is a unique experience in culture, music and food. It also includes an exhibition, craft shop, tearoom and tourist information point.

**T** 065 708 8030  
[www.TheBurrenCentre.ie](http://www.TheBurrenCentre.ie)

MAP REF: H4



## Burren Experience Guided Walks

📍 Corofin, Co. Clare



Enjoy a Burren Wilderness Experience. Immerse yourself in the magic of the hidden Burren with Marie McGauran, a native walking guide who leads heritage, nature and spiritual walks in the Burren. The guided walking tours are stimulating, a complete engagement in this wilderness where one can absorb the peace, stillness, and beauty of this magical ground. Come away feeling energised and enriched.

**T** 086 821 9441  
[www.Mullaghmore-Burren.com](http://www.Mullaghmore-Burren.com)

MAP REF: I5

## Walk With Pius

📍 Corofin, Co. Clare



Unique guided walks in the Burren, in County Clare and on the Aran Islands. These enable the visitor to connect with the landscape, walk on limestone paving, visit archaeological and sacred sites and enjoy the breath-taking scenery. Exploring the flora, fauna, geology, history, mythology and farming practices are an integral part of the guided walks. Walks are for every ability, from ambles to longer hikes.

**T** 087 982 8173  
[www.WalkWithPius.com](http://www.WalkWithPius.com)

MAP REF: I5

## Caherconnell Fort & Sheepdog Demonstrations

📍 Carron, Co. Clare



A remarkable Burren sheep farm with a direct connection to Ireland's bronze age and medieval ancestors. It includes a medieval stone ringfort, a bronze age doline, archaeological excavations and fascinating artefacts giving insights into Ireland's earliest ancestors. You can also enjoy sheepdog demonstrations, meet a Davoren shepherd and watch border collies herd sheep and cattle. Café and gift shop on-site.

**T** 065 708 9999  
[www.Caherconnell.com](http://www.Caherconnell.com)

MAP REF: I3

## The Burren Perfumery

📍 Carron, Co. Clare



Ireland's oldest perfume house is a unique experience. The Perfumery draws inspiration from the flora and beauty of the Burren landscape to create its signature scents, certified organic skincare, and hand-crafted soaps and candles. This family business is unique, and all products are made by hand. Visitors can watch the products being made, tour the premises, and even try their hand at creating something.

**T** 065 708 9102  
[www.BurrenPerfumery.com](http://www.BurrenPerfumery.com)

MAP REF: I3

## Michael Cusack Centre

📍 Carron, Co. Clare



The Cusack Centre, in the heart of the Burren, was founded in memory of legendary Irishman Michael Cusack. Born in the worst years of the famine, Michael gave Ireland and the world the Gaelic Athletic Association - one of the world's greatest sports organisations. The Centre tells his story and includes an exhibition, audio-visual experience, Michael's restored famine-era thatched cottage, tea rooms and gift shop.

**T** 065 708 9944  
[www.MichaelCusack.ie](http://www.MichaelCusack.ie)

MAP REF: I3

## Burren Farm Experience

📍 Boston, Tubber, Co. Clare



Ireland's authentic farm experience - rich in heritage, biodiversity and breath-taking beauty, in the heart of the Burren. Be awe-inspired by dramatic landscapes, ancient woodlands and archaeological sites, glistening lakes and habitats teeming with wildlife and rare plants. Learn about the ancient farming practice of transhumance, try forest bathing in the ancient woodland and feast on picnics with delicious local produce.

**T** 086 399 0440  
[www.BurrenFarmExperience.ie](http://www.BurrenFarmExperience.ie)

MAP REF: K4



## ➤ **Nevsail Watersports & Adventures**

📍 Kilkee, Co. Clare



Nevsail was set up in 2004 and offer tours, lessons and outings on the water and land, including kayaking, surfing, coasteering, stand-up paddle -boarding, archery, rock climbing and abseiling for all ages and groups. They cater to individuals, families, large group outings and team-building events.

**T** 086 330 8236  
[www.NevsailWatersports.ie](http://www.NevsailWatersports.ie)

MAP REF: D9

## ➤ **Natural Seaweed Bath**

📍 Kilkee, Co. Clare



Bathe in heated seawater and freshly harvested seaweed to ease away aches and pains in 200-year-old Victorian porcelain baths. Also beneficial for skin ailments like psoriasis, dermatitis and eczema. It is the ultimate in relaxation. Pre-booking advisable.

**T** 065 905 6742  
[www.KilkeeThalasso.com](http://www.KilkeeThalasso.com)

MAP REF: D9

## ➤ **Emerald Irish Tours**

📍 Kilkee, Co. Clare



Emerald Irish Tours is family-run business, with offices located on the spectacular Loop Head Peninsula. It's their background and knowledge that makes their tours special, ensuring that you will have a memorable time in Ireland, whether it is going off the beaten track or having a nice cold pint of Guinness at the local. Their driver guides are local, knowledgeable, engaging and entertaining.

**T** 087 960 2047  
[www.EmeraldIrishTours.com](http://www.EmeraldIrishTours.com)

MAP REF: D9

## ➤ **Alpaca Trekking in West Clare**

📍 Flying Alpacas, Kilkee, Co. Clare



Flying Alpacas are waiting for you! Jump into the fields and meet their fluffy alpacas in Loop Head. Feed and cuddle them and learn some curious facts about these weird animals. Take an alpaca on the lead for a trek and take pictures and selfies to remember! The trekking is suitable for all fitness levels and lasts about 1 hour. Suitable for 12 years and over.

**T** 083 835 7180  
[www.FlyingAlpaca.com](http://www.FlyingAlpaca.com)

MAP REF: D9

## ➤ **Fishing Adventures Ireland**

📍 Kilbaha, Co. Clare



Enjoy sea angling, dolphin watching, and scenic tours on the Wild Atlantic Way from Kilbaha on the Loop Head Peninsula County Clare. They cater for groups, individuals, and families. From Kilbaha, it takes 15 to 20 minutes to reach the Atlantic Ocean. They also provide the option for you to fish the Shannon Estuary if the weather is not suitable for the Atlantic Ocean.

**T** 087 750 8758  
[www.FishingAdventures.ie](http://www.FishingAdventures.ie)

MAP REF: B10

## ➤ **Loop Head Lighthouse**

📍 Kilbaha South, Co. Clare



Loop Head Lighthouse is on the tip of the Loop Head peninsula – the cliff-girt headland that separates the Shannon Estuary from the roaring waters of the Atlantic Ocean. The lighthouse is the major landmark, with 90-metre high sea views down to Kerry Head and Dingle across the Shannon and up the Clare coast. It is a wonderful breath-taking visitor experience.

**T** 087 223 4263  
[www.LoopHeadLighthouse.ie](http://www.LoopHeadLighthouse.ie)

MAP REF: A10



## Loop Head E-bikes

📍 Carrigaholt, Co. Clare



Loop Head E-bikes is an e-bike rental and tour company operating on Loop Head Peninsula. Biking is one of the best ways to explore this spectacular area. Feel the elements and explore the rich geographical, geological, cultural and historical heritage. See castles, cliffs, beaches, Napoleonic military architecture and breath-taking scenery from quiet country roads with minimal traffic. Suitable for all fitness levels.

**T** 086 888 6820  
[www.LoopHeadBikeHire.ie](http://www.LoopHeadBikeHire.ie)

MAP REF: C10

## Carrigaholt Sea Angling

📍 Carrigaholt, Co. Clare



Carrigaholt Sea Angling is based on the south side of the Loop Head peninsula, where the Shannon Estuary meets the rich fishing grounds of the south-west coast. Their sea-angling trips depart from the fishing village of Carrigaholt. They offer deep sea fishing trips for everyone from the experienced sea angler to the fishing novice, whether for a day charter or a complete fishing, accommodation and food package.

**T** 087 636 7544  
[www.FishAndStay.com](http://www.FishAndStay.com)

MAP REF: C10

## Dolphin Discovery

📍 Kilrush Marina, Co. Clare



If you are looking for a great day out in West Clare, take a boat trip from Kilrush Marina to see the resident group of bottlenose dolphins in the Shannon Estuary. This is truly a unique visitor experience on Ireland's Wild Atlantic Way. The trip takes approximately 2 hours and operates from May to September.

**T** 065 905 1327  
[www.DiscoverDolphins.ie](http://www.DiscoverDolphins.ie)

MAP REF: E9

## Scattery Island Tours

📍 Kilrush Marina, Co. Clare



Located just off Kilrush and awarded The EDEN award for 2017, Scattery Island is truly a unique visitor experience on the Wild Atlantic Way. Visitors to the island are amazed at the wealth of historic sites, including five churches, a cathedral, a round tower, Napoleonic war artillery battery and a working lighthouse.

**T** 085 250 5512  
[www.ScatteryIslandTours.com](http://www.ScatteryIslandTours.com)

MAP REF: E9

## West Coast RIB Adventures

📍 Kilrush Marina, Co. Clare



Embrace your sense of adventure and get ready for a thrilling RIB ride on the Shannon Estuary with its stunning coastal scenery, cliff coast, dolphins and wildlife. Choose from a 2.5 Hour 'Sea Safari' along the Kerry Coastline or their one-hour 'Splash & Dash' tour around the islands! Their RIB "Sionnach" features individual jockey seats for your comfort and safety and can take up to 12 passengers. Pre-booking required.

**T** 085 250 5512  
[www.ScatteryIslandTours.com](http://www.ScatteryIslandTours.com)

MAP REF: E9

## West Coast Aqua Park

📍 Kilrush Marina, Co. Clare



Located on the picturesque marina in Kilrush, this is the only aqua park on the Wild Atlantic Way. You can slide, climb and bounce your way around their inflatable obstacle course on the water! Children as young as six can take part, and under the watchful eye of their experienced lifeguards, they will make sure you and your friends and family have an unforgettable experience.

**T** 087 954 3000  
[www.WestCoastAquaPark.ie](http://www.WestCoastAquaPark.ie)

MAP REF: E9

## Sionnan Luxury Cruises

📍 Kilrush Marina, Co. Clare



Enjoy the secrets of Ireland's most majestic river, with its historic islands and abundance of wildlife, on a private cruise experience with Sionnan Luxury Cruises. Cruises can be booked for up to 8 people. Their exclusive cruiser, 'Sionna', can also be reserved for private accommodation. The vessel, moored in a private Marina, features understated elegance with two double bedrooms, and can accommodate up to 4 people.

**T** 086 811 0010  
[www.SionnanLuxuryCruises.ie](http://www.SionnanLuxuryCruises.ie)

MAP REF: E9

## Vandeleur Walled Garden

📍 Kilrush, Co. Clare



A wonderful, sheltered walled garden, formerly part of the Vandeleur Family Demesne and covering 2.158 acres. It is set among 420 acres of native woodland. It was restored around the old paths with a horizontal maze, water features and a Victorian-style working glasshouse. It specialises in unusual and tender plants that thrive in the areas unique western micro-climate. Coffee shop, plant and gift shop.

**T** 065 905 1760  
[www.VandeleurWalledGarden.ie](http://www.VandeleurWalledGarden.ie)

MAP REF: E9

## Oyster Farm Experience

📍 Moyasta, Kilrush, Co. Clare



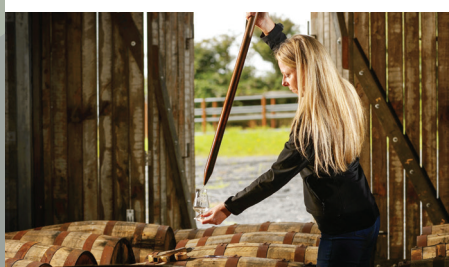
Moyasta Oysters love sharing their oyster story with guests from around the globe. Visitors are always fascinated to see what goes into producing the perfect oyster. They offer a tour of their farm and a rare experience you'll never forget! You will learn how they grow their oysters from seed to fully-grown oysters. You will also get to taste an oyster like no other.

**T** 087 661 3097  
[www.MoyastaOysters.com](http://www.MoyastaOysters.com)

MAP REF: E9

## JJ Corry - Experience the lost Art of Whiskey Bonding

📍 Cooraclare, Co. Clare



Become immersed in their award-winning whiskeys with a journey through their library of flavours. Be captivated by their insights into the history of Whiskey Bonding, its tradition and about their namesake J.J Corry. Breathe in the scents of wooden casks full of maturing whiskeys in their unique rackhouse, discovering the secrets behind the flavours of J.J Corry whiskey and the different maturation techniques.

**T** 086 384 0722  
[www.jjCorry.com](http://www.jjCorry.com)

MAP REF: F8

## West Clare Equestrian Experience

📍 Cooraclare, Co. Clare



West Clare Equestrian offer fantastic beach rides along Doughmore Bay and cater for all levels of riders - from beginners to more experienced. They also offer rides along beautiful, scenic bog trails, again catering for all proficiency levels, guided by friendly and experienced staff

**T** 065 905 9115  
[www.WestClareEquestrian.com](http://www.WestClareEquestrian.com)

MAP REF: F8

## Did you Know?



**Clare has seven Blue-Flag beaches and one Blue-Flag Marina** on its amazing Wild Atlantic Way Coastline: These are Cappa Pier, Kilrush; Fanore; Kilkee; Kilrush Marina; Lahinch; Spanish Point; White Strand Doonbeg; and White Strand Miltown Malbay.



## Ennis Friary

📍 Ennis, Co. Clare



The O'Briens of Thomond, who once ruled much of north Munster, founded this medieval Franciscan friary. It grew into a huge foundation, with 350 friars and a famed school of 600 pupils by 1375. The building contains an exceptional wealth of fifteenth- and sixteenth-century sculptures carved in the local limestone, including St Francis displaying the stigmata.

**T** 065 682 9100  
[www.HeritageIreland.ie](http://www.HeritageIreland.ie)

MAP REF: J6

## Ennis Museum

📍 Ennis, County Clare



Clare Museum, the county museum for Clare, tells the county's history over a period of 6,000 years using authentic archaeological and historical objects, including finds from Poulnabrone. It includes a large collection of objects on loan from the National Museum of Ireland, making a visit to the Museum an essential introduction to the county.

**T** 065 682 3382  
[www.ClareLibrary.ie/eolas/claremuseum/](http://www.ClareLibrary.ie/eolas/claremuseum/)

MAP REF: J6

## glór - A Thriving Arts Centre

📍 Ennis, Co. Clare



glór is a thriving arts centre that serves the people of the Region with a vibrant programme of theatre, music, dance, visual arts, film and workshops. glór works with a wide range of promoters, artists, partners and local Festivals to celebrate national, international and local talent. Its Gallery, 485-seat Theatre, and 60-seat Studio host a diverse range of artists and entertainments for locals and visitors to enjoy.

**T** 065 684 5370  
[www.glor.ie](http://www.glor.ie)

MAP REF: J6

## Ennis Walking Tours

📍 Ennis, Co. Clare



Discover Medieval Ennis with an expert local historian. Ennis Walking Tours has been running entertaining and thought-provoking walking tour experiences of the medieval town of Ennis since 2005. In the company of local expert guide Jane O'Brien, visitors are led through the atmospheric streets and "bow-ways" of this market town while the characters and stories that shaped its history are revealed.

**T** 087 648 3714  
[www.EnnisWalkingTours.com](http://www.EnnisWalkingTours.com)

MAP REF: J6

## Clare Water Sports

📍 Ennis, Co. Clare



Clare Water Sports are based at Ballyalla Lake, Ennis and White Strand beach near Lahinch. They provide pre-booked guided kayaking and SUP tours, year-round, and they provide kayaks and SUP boards for rental at both locations during July and August. They cater for individuals, group outings, team building events, school tours, corporate outings, and more. Kids summer camps are offered at Ballyalla Lake, Ennis.

**T** 085 148 5856  
[www.ClareWaterSports.com](http://www.ClareWaterSports.com)

MAP REF: J6

## Drumcliffe Equestrian Centre

📍 Ennis, Co. Clare



Drumcliffe Equestrian is a family-run centre, just outside Ennis' town, on a picturesque 100-acre farm, ideal for trekking. They cater for all ages and abilities, from beginners to advanced, and have horse and ponies chosen for their lovely nature. During the summer months, they run pony camps, where children and teenagers can have an introduction to ponies or improve their riding.

**T** 087 7788162  
[www.DrumcliffeEquestrian.ie](http://www.DrumcliffeEquestrian.ie)

MAP REF: J6

## Shannon Aviation Museum

📍 Shannon Town, Co. Clare



Learn more about the fascinating world of flight and engineering with a visit to Shannon Aviation Museum. Try out their Aviation Discovery Tour with a virtual flying lesson in their flight simulators, then see cockpits, jet engines, and even an aircraft carrier jet, plus a unique collection of model aircraft, artefacts, and memorabilia. Bookable online.

☎ 061 363 687

[www.ShannonAviationMuseum.com](http://www.ShannonAviationMuseum.com)

MAP REF: J8

## Bunratty Castle & Folk Park

📍 Bunratty, Co. Clare



Set across 26 acres, explore the iconic 15th century castle and over 30 buildings in a 'living' recreated 19th-century village and rural setting. Meet rare breeds of native Irish animals, follow the interactive fairy trail and let loose in their Viking playground. With walled gardens, woodland trails and a host of colourful characters, a trip to Bunratty Castle and Folk Park is an adventure!

☎ 061 711 222

[www.BunrattyCastle.ie](http://www.BunrattyCastle.ie)

MAP REF: K8

## Craggaunowen - The Living Past Experience

📍 Kilmurry, Co. Clare



Ireland's original award-winning pre-historic park. Explore the roots of the people, homesteads, animals and artefacts of our Celtic ancestors of over 1,000 years ago, which have touched and shaped how we live today. Explore the crannog lake dwelling, an early Christian ringfort, souterrain, 16th-century castle and the famous Brendan Boat. Observe rare breeds of animals, including wild boar and Soay sheep.

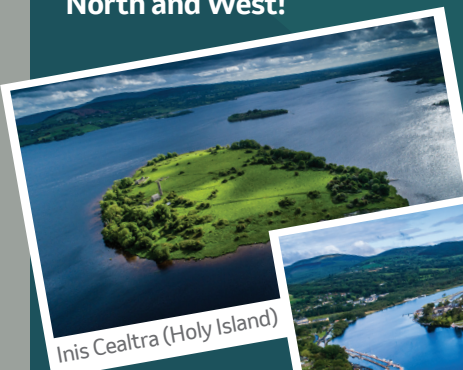
☎ 061 711 222

[www.Craggaunowen.ie](http://www.Craggaunowen.ie)

MAP REF: K7

# County Clare is Amazing - Take it ALL in

Clare has an amazing Wild Atlantic Way coastline, but that's only one part of the Clare experience. If you want to enjoy Clare to the fullest, take it ALL in.... East, South, North and West!



Inis Cealtra (Holy Island)



Ennis



Walking in East Clare



The Burren



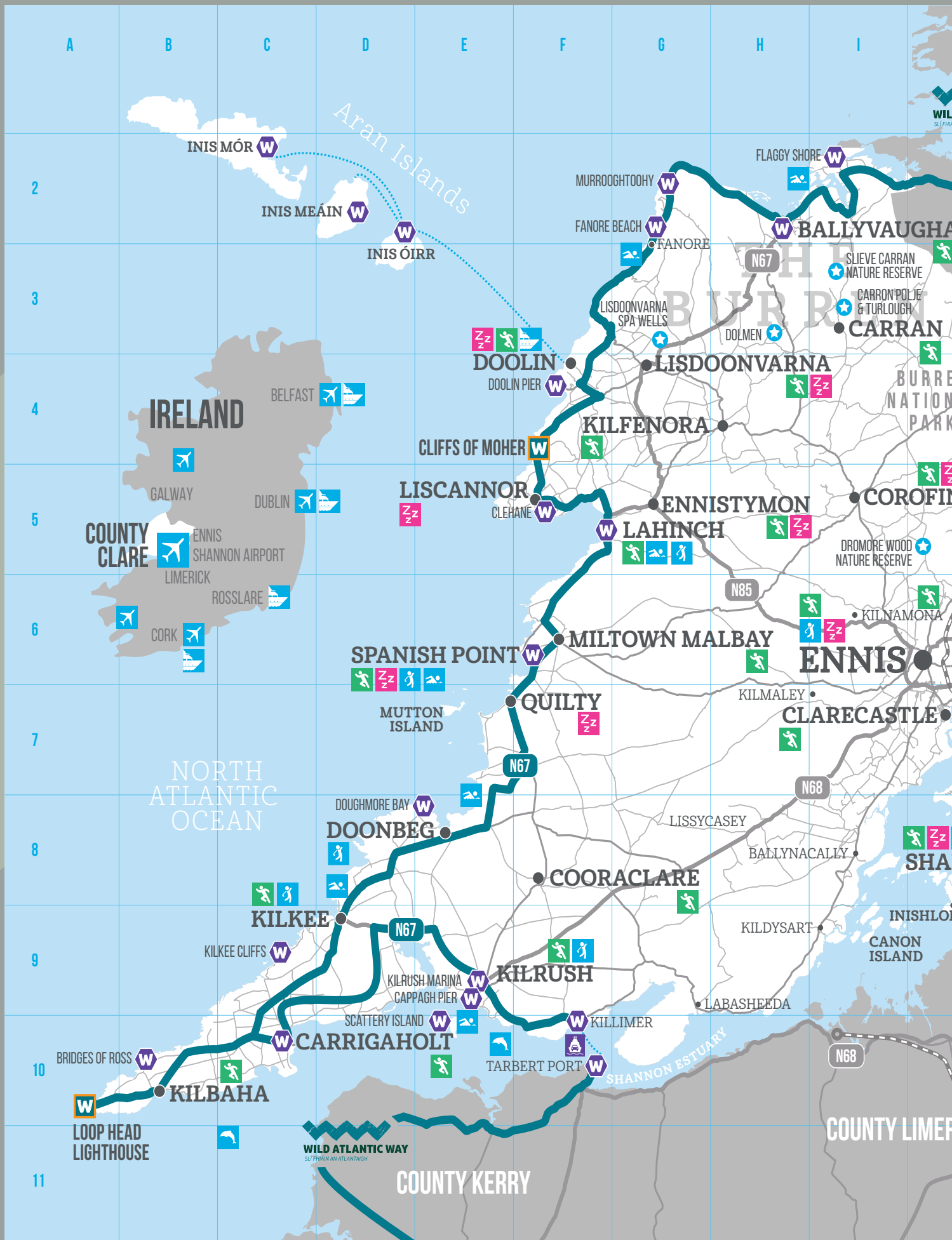
Killaloe

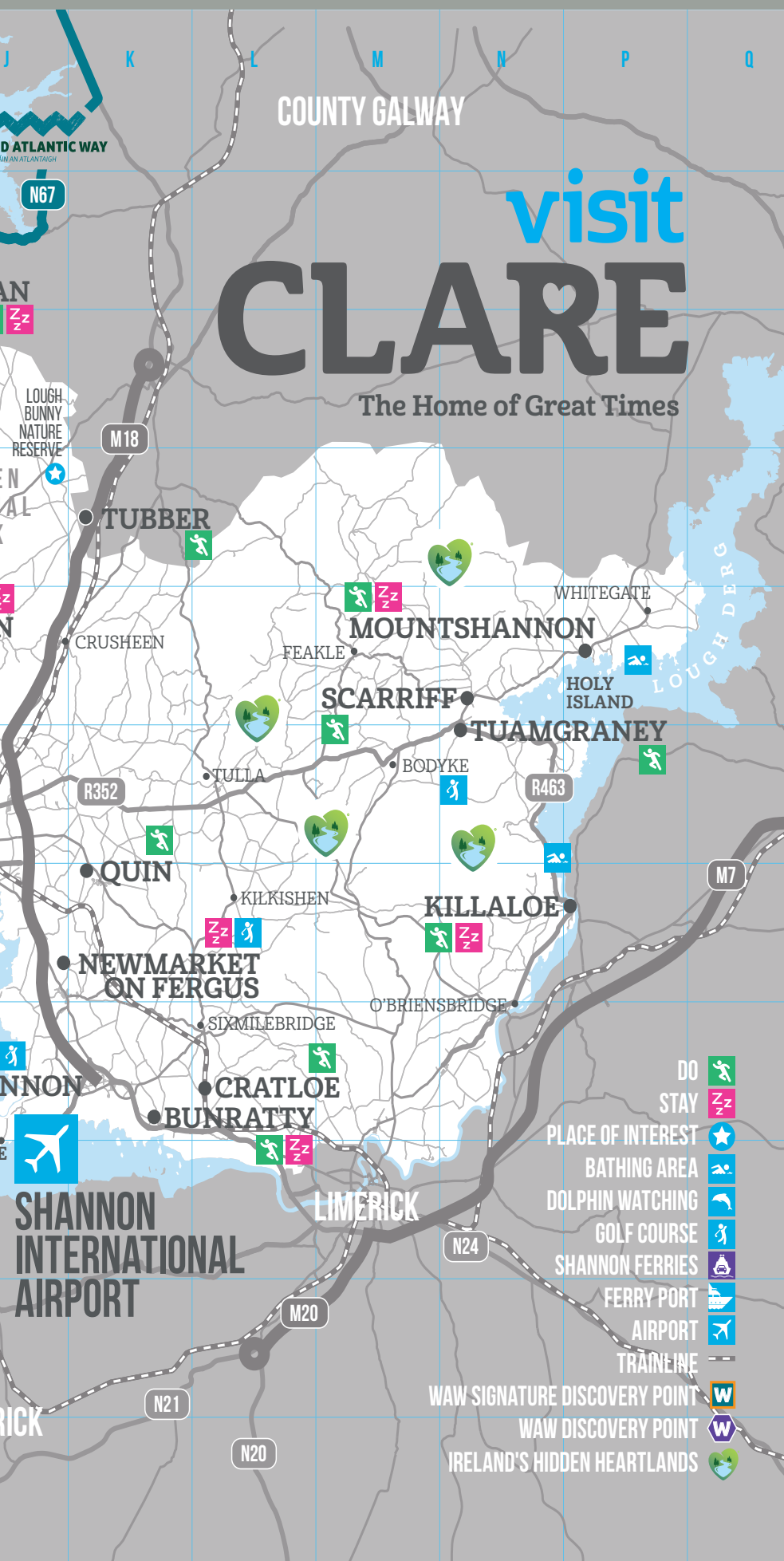


Lough Derg

See [www.Clare.ie](http://www.Clare.ie)







# Clare's Wild Atlantic Way

Clare's Wild Atlantic Way is amazing and full of wonderful attractions and experiences. In addition to the experiences highlighted in this guide, add in spectacular scenery, towering cliffs, Blue-Flag beaches, the Burren, ancient monuments, quaint towns and villages, and cosy stop-off places to eat.

Below, we give some sense of travel distances, and the length of the Atlantic Way Coastline can easily be covered in a day. However, the better way to experience Clare's Wild Atlantic Way is at leisure – taking in just part of the area in any single day and enjoying one or more of the many experiences. It will be far more enjoyable and, if you want to take it all in, we recommend you stay a few nights in the area, or visit often.

## Selected Distances

- Ennis to Lahinch: 30km
- Ennis to Spanish Point: 35km
- Ennis to Ballyvaughan: 38km
- Ennis to Cliffs of Moher: 40km
- Ennis to Kilrush: 43km
- Ennis to Kilkee: 57km
- Ennis to Loop Head Lighthouse: 81km
- Ballyvaughan to Fanore: 16km
- Fanore to Doolin: 15km
- Ballyvaughan to Cliffs of Moher: 29km
- Cliffs of Moher to Lahinch: 11km
- Lahinch to Spanish Point: 14km
- Spanish Point to Kilkee: 29km
- Kilkee to Loop Head Lighthouse: 27km
- Loop Head to Kilrush via Carrigaholt: 40km

**Note:** when travelling by car, allow extra travel time than the distances might suggest. The roads can be narrow and winding, which makes the journey more interesting!

## Planning to visit from overseas?

If you plan to arrive in Ireland by sea or air, you can be in Clare within two to four hours – depending on your point of entry. However, the easiest way to reach Clare is via Shannon International Airport, located in the county. See [www.ShannonAirport.ie](http://www.ShannonAirport.ie)



